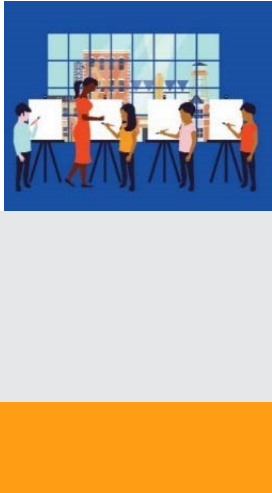




The National Endowment for the Arts is the only funder, public or private, that supports the arts in all **50 States** in the United States.

**In the past 5 years...** The National Endowment for the Arts distributed more than **\$42,105,100** in grants in **California**.



In one year alone...

- Arts and cultural production in California added **7.0%**, or **\$185.5 billion** to the state's economy.
- California's arts and cultural industries employ **738,284** workers. These workers earn wages and benefits totaling **\$83.4 billion**.
- **32.2%** of California's adults attended live music, theater, or dance performances, while **21.4%** attended art exhibits.

**National Endowment for the Arts Programs from FY16-FY18**

The **Blue Star Museums** program provided free admission to thousands of active military personnel and their families at **420 participating museums** in California.

The **Poetry Out Loud** is a national competition which develops communication skills, presence, and confidence through the study, memorization, and public recitation of poetry. In California, over **90,010 students** participated from among **746** high schools.

The **Big Read** program generated **1,107** community events focused on reading outstanding American literature and involving more than **88,610** adults and students in California.

The **Shakespeare in American Communities** program enabled schools in California to offer **24,200** children the opportunity to see free live professional performances of Shakespeare.

The **Creative Forces** program is expanding access to creative arts therapies and arts engagement opportunities for injured service members, veterans, and their families and caregivers. Marine Corps Base Camp Pendleton is participating in this innovative program.



**2019 Agency Calendar of Events**

*Blue Star Museums: Armed Forces Day (5/18) - Labor Day (9/2)*

*June Meeting of the National Council on the Arts: 6/19-6/21*

*National Book Festival: 8/31*

*National Heritage Fellows Awards & Concert: 9/18-9/20*

*October Meeting of the National Council on the Arts: 10/24-10/25*





## NOTEWORTHY

### Examples of Schools & Organizations Receiving Past Endowment Support Include:

<b>CA-1</b> <i>Karuk Tribe Yreka Campus</i>	<b>CA-10</b> <i>Pitman High School Gallo Center for the Arts</i>	<b>CA-19</b> <i>Opera Cultura San Jose Museum of Art</i>	<b>CA-29</b> <i>Los Angeles Jazz Society Shakespeare at Play</i>	<b>CA-41</b> <i>Riverside Art Museum</i>
<b>CA-2</b> <i>Youth in Arts Golden Gate Opera</i>	<b>CA-11</b> <i>Ryse California Symphony</i>	<b>CA-20</b> <i>Spectordance</i>	<b>CA-30</b> <i>Deaf West Theatre Operaworks</i>	<b>CA-42</b> <i>Corona Public Library</i>
<b>CA-3</b> <i>Rio Linda High School Pena Adobe Society</i>	<b>CA-12</b> <i>Rova-Arts DanceArt</i>	<b>CA-21</b> <i>Kings Regional Folk Art</i>	<b>CA-31</b> <i>Sinfonia Mexicana</i>	<b>CA-43</b> <i>Matsutoyo Kai</i>
<b>CA-4</b> <i>Tahoe Arts Project Placer High School</i>	<b>CA-13</b> <i>Kitka Oaklan Youth Chorus</i>	<b>CA-22</b> <i>Dinuba High School Visalia Arts Consortium</i>	<b>CA-32</b> <i>Southland Sings</i>	<b>CA-44</b> <i>Long Beach Opera</i>
<b>CA-5</b> <i>Di Rosa Rancho Cotate</i>	<b>CA-14</b> <i>Lowell High School Eldergivers</i>	<b>CA-23</b> <i>Arts Council of Kern Bakersfield Museum</i>	<b>CA-33</b> <i>Venice Arts</i>	<b>CA-45</b> <i>Arts Orange County</i>
<b>CA-6</b> <i>916 INK Crocker Art Museum</i>	<b>CA-15</b> <i>Amador Valley High McConaghy House</i>	<b>CA-24</b> <i>Art Without Limits Paso Roble High School</i>	<b>CA-34</b> <i>Taikoproject Arts for LA</i>	<b>CA-46</b> <i>Pacific Symphony</i>
<b>CA-7</b> <i>Capital Christian High School Elk Grove School District</i>	<b>CA-16</b> <i>Radio Bilingue Fresno, CA</i>	<b>CA-25</b> <i>Redbird</i>	<b>CA-35</b> <i>SoCal Medical Museum</i>	<b>CA-47</b> <i>Catalina Island Museum</i>
<b>CA-8</b> <i>Main Street Murals Bishop High School</i>	<b>CA-17</b> <i>Live Oak Academy Treatro Vision</i>	<b>CA-26</b> <i>Ojai Valley Museum</i>	<b>CA-36</b> <i>Palm Springs Art</i>	<b>CA-48</b> <i>Pacific Chorale</i>
<b>CA-9</b> <i>The Haggin Museum Bear Creek High School</i>	<b>CA-18</b> <i>Clarion Foundation Mozilla Foundation</i>	<b>CA-27</b> <i>Pitzer College</i>	<b>CA-37</b> <i>Show Box LA</i>	<b>CA-49</b> <i>The PGK Project</i>
		<b>CA-28</b> <i>Clockshop</i>	<b>CA-38</b> <i>Rio Hondo Symphony</i>	<b>CA-50</b> <i>ArtHatch</i>
			<b>CA-39</b> <i>Chance Theater</i>	<b>CA-51</b> <i>Bayfront Charter</i>
			<b>CA-40</b> <i>Downey Symphony</i>	<b>CA-52</b> <i>Old Globe Theatre</i>
				<b>CA-53</b> <i>Classics for Kids</i>

### Your State Arts Agency: California Arts Council

Director: Anne Bown-Crawford

Phone: 916-322-6555

Email: [anne.bown.crawford@cac.ca.gov](mailto:anne.bown.crawford@cac.ca.gov)

